

ELECTRIC VEHICLE RACEWAY

ABOUT

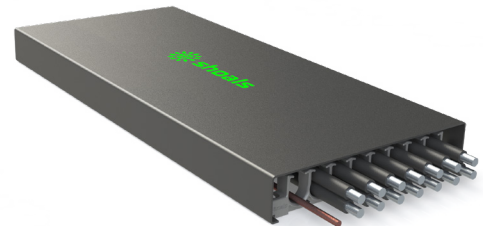
Shoals introduces the Electric Vehicle Raceway for EV BLA (Big Lead Assembly) to simplify the deployment of EV charging infrastructure. The EV Raceway is an above ground cable management and protection system that eliminates the need for trenching and speeds deployment.

FEATURES

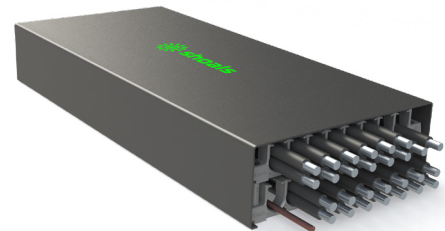
- Designed for above ground installation
- Two-piece design for cable routing and cable protection
- Used between Shoals Quick Connect Bases or along cable route
- Sized and rated for multiple Shoals EV BLA cables
- Thermally and Electrically tested for BLA cables
- Standard 5-year warranty on all models
- ETL Listed to UL5 - Surface Metal Raceways and Fittings
- ETL Listed to UL870 - Wireways, Auxiliary Gutters, and Associated Fittings

OPTIONS

- Walk Over Raceway can be stacked two-high to increase cable capacity
- Available in multiple lengths
- Clip plate for mounting along asphalt
- 30° bends for turns and routing around obstacles on site



Walk Over Raceway



Walk Over Raceway - Stacked

TECHNICAL SPECS	Single High Raceway	Double High Raceway
Max Cable Size	500 MCM	500 MCM
Max Number of Cables	10 (500 MCM)	18 (500 MCM)
Max Current	200A per 500 MCM cable	200A per 500 MCM cable
Max Ambient Temp	50° C	50° C
Height	3"	5.625"
Width	16.25"	16.25"
Length*	57", 70", 84"	57", 70", 84"

*Raceway can be field cut to shorter lengths to accommodate project dimensions. Product design and specification subject to change or modification without notice.

