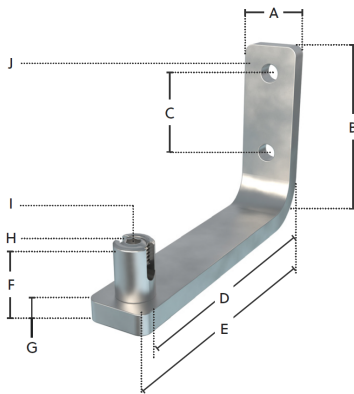


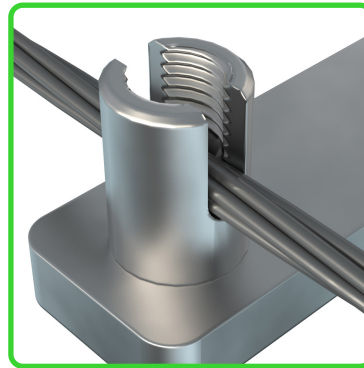
SHOALS™ CABLE MANAGEMENT SOLUTION MESSENGER BRACKET

ABOUT

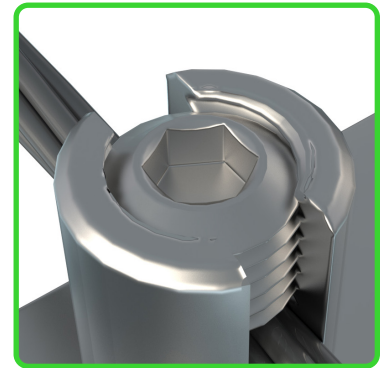
As part of the Shoals Cable Management Solution, the Messenger Bracket holds the tension at an interval allowing for much longer spans. A quick drop in feature allows for fast installation while the barrel clamp stops any lateral movement of the messenger wire, keeping a safe and consistently tensioned messenger wire.



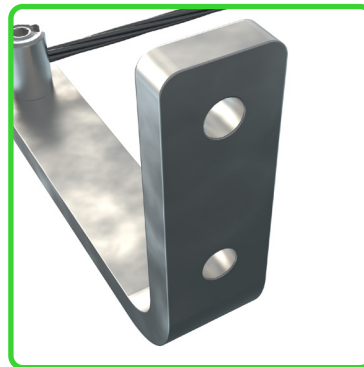
- A 30 mm / 1.2 in
- B 100 mm / 4.0 in
- C 50 mm / 2.0 in (M10 / 3/8" holes)
- D 142 mm / 5.6 in
- E 163 mm / 6.4 in
- F 35 mm / 1.4 in
- G 10 mm / 0.4 in
- H Aluminium 6062
- I 6 mm / 0.2 in Hex
- J EN1A Steel with G90 Galvanisation



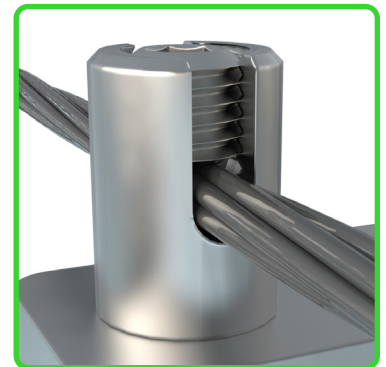
Fast
'Drop-in' installation



One Tool
Standard hex drill bit



M10 Fixing Holes
Standard bolts required



Secure Fixing
No sharp edges

PERFORMANCE

WMS00004

Working Load	200 kg / 441 lbs*
Working Temp	-40°C to 90°C
Unit Weight	0.58 kg / 1.3 lbs
Design Life	30+ years
UL Listing	UL 2239

* For deflection data or additional load information contact Technical Services.

