

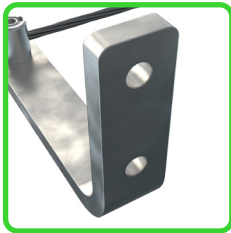
SHOALS™ CABLE MANAGEMENT SOLUTION MESSENGER BRACKET

ABOUT

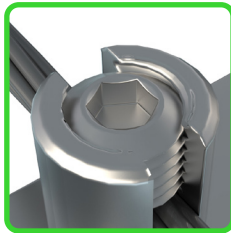
As part of the Shoals Cable Management Solution, the Messenger Bracket holds the tension at an interval allowing for much longer spans. A quick drop in feature allows for fast installation while the barrel clamp stops any lateral movement of the messenger wire, keeping a safe and consistently tensioned messenger wire.

FEATURES

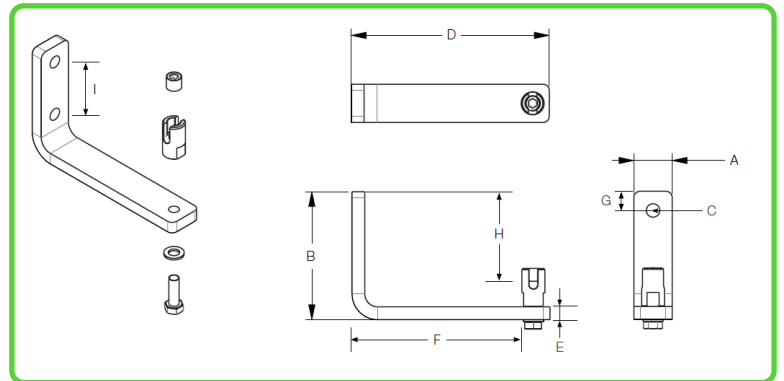
- Bracket: Hot dip galvanised steel
- Messenger wire hub: Aluminum 6062
- Messenger hub screw: Stainless steel
- Standard 5-year warranty on all models
- UL listed per UL2239



M10 Fixing Holes
Standard bolts required



One Tool
Standard 6mm hex



	WMS00004	WMS00017	WMS00018
A - Width	30 mm 1.18 in	45 mm 1.77 in	45 mm 1.77 in
B - Height	100 mm 3.94 in	110 mm 4.33 in	110 mm 4.33 in
C - Fixing holes	11 mm .43 in	11 mm .43 in	11 mm .43 in
D - Length	155 mm 6.10 in	155 mm 6.10 in	250 mm 9.84 in
E - Material thickness	10 mm .39 in	12 mm .47 in	12 mm .47 in
F - Catenary fixing point to post	142 mm 5.59 in	142 mm 5.59 in	237 mm 9.33 in
G - Top of bracket to 1st fixing hole	15 mm .59 in	15 mm .59 in	15 mm .59 in
H - Top of bracket to catenary fixing point	72 mm 2.83 in	81 mm 3.19 in	81 mm 3.19 in
I - Distance between fixing points	50 mm 1.97 in	50 mm 1.97 in	50 mm 1.97 in

PERFORMANCE	WMS00004	WMS00017	WMS00018
Description	6" 440 lb L-bracket	6" 600 lb L-bracket	10" 440 lb L-bracket
Working Load	440 lbs / 200 kg*	600 lbs / 272 kg*	440 lbs / 200 kg*
Working Temp	-40°C to 90°C	-40°C to 90°C	-40°C to 90°C
Unit Weight	1.3 lbs / 0.6 kg	2.2 lbs / 1.0 kg	3.1 lbs / 1.4 kg
Design Life	30+ years	30+ years	30+ years

* For deflection data or additional load information contact Technical Services.

